

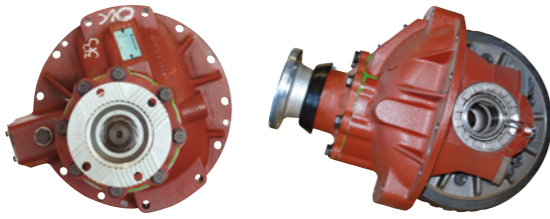
# CORE DIFFERENTIAL IDENTIFICATION

TABLEAU D'IDENTIFICATION DE DIFFÉRENTIEL - IDENTIFIZIERUNG VON DIFFERENZIALE - IDENTIFICAZIONE CARCASSE DIFFERENZIALI - DIFFERENTIELEN STATIEGELD IDENTIFICATIE - DETALLES DE IDENTIFICACIÓN DE LOS DIFERENCIALES - SZCZEGÓŁY IDENTYFIKACJI TYPU DYFERENCJAŁY - ИДЕНТИФИКАЦИЯ ДИФФЕРЕНЦИАЛЫ



**MERITOR**

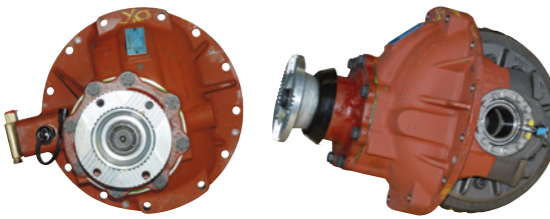
MCA125E



### CORE GROUP MCA126E

Series	Base Number	Casting
120E	3200T1528	3200S1527
125E	3200R1526	3200Q1525

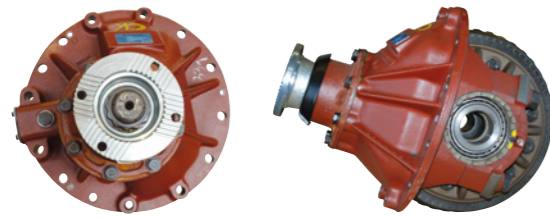
MCA127E



### CORE GROUP MCA127E

Series	Base Number	Casting
127E	3200C1745	3200B1744
127E	3200E1747	3200D1746

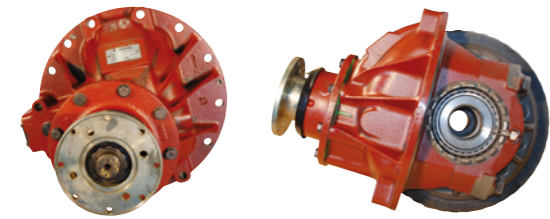
MCA130E



### CORE GROUP MCA130E

Series	Base Number	Casting
130E	3200A1535	3200I1534
130E	3200J1726	3200H1724

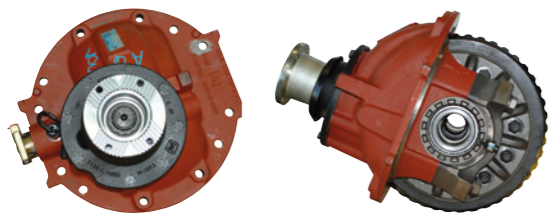
MCA145E



### CORE GROUP MCA145E

Series	Base Number	Casting
140E	3200K1493	3200J1492
145E	3200E1617	3200E1617
145E	3200G1879	3200F1878
145E	3200K1987	3200N1886
145E	3200L1676	3200K1675
145E	3200P1888	3200N1886
145E	3200W1817	3200K1623
145E	3200S1865	3200R1864

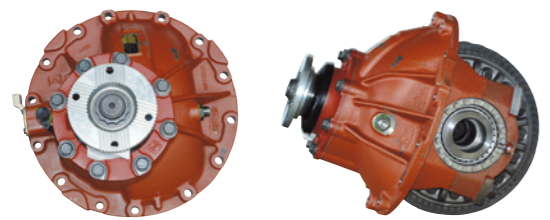
MCA147E



### CORE GROUP MCA147E

Series	Base Number	Casting
147E	3200A8269	3200Z8268

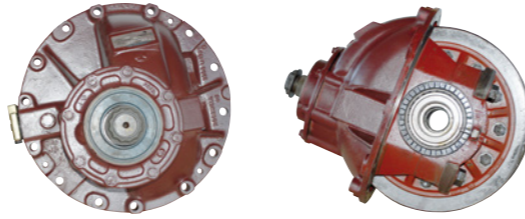
MCA150E



### CORE GROUP MCA150E

Series	Base Number	Casting
150E	3200A2055	3200J2038
150E	3200G1515	3200G1489
150E	3200G2035	3200F2034
150E	3200K2039	3200J2038
150E	3200Z2054	3200F2034

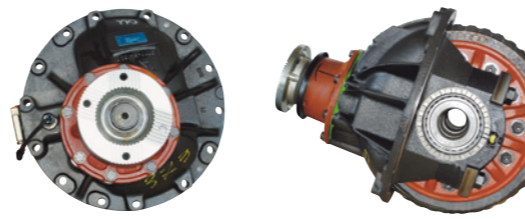
MCA153E



### CORE GROUP MCA153E

Series	Base Number	Casting
153E	3200G1541	3200M1469
153E	3200V1530	3200U1529
153E	3200X1532	3200W1531

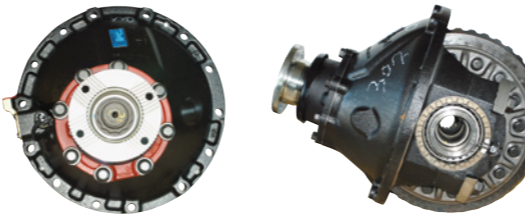
MCA160E



### CORE GROUP MCA160E

Series	Base Number	Casting
160E	3200C1537	3200B1536
160E	3200F1514	3200V1400
160E	3200P1706	3200N1704
160E	3200V1894	3200U1893
160E	3200W1401	3200V1400

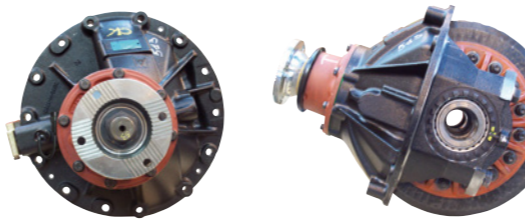
MCA177E



### CORE GROUP MCA177E

Series	Base Number	Casting
177E	3200B2082	3200A2081
177E	3200M2041	3200T2048
177E	3200N2120	3200M2119
177E	3200W1739	3200V1738
167E	3200L2040	3200T2048
167E	3200W1739	3200V1738

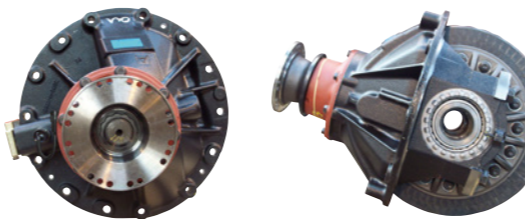
MCA180E



### CORE GROUP MCA180E

Series	Base Number	Casting
180E	3200E1539	3200D1538
180E	3200F1540	3200D1538
180E	3200U1399	3200T1398

MCA186E



### CORE GROUP MCA186E

Series	Base Number	Casting
186E	3200I1752	3200H1750
186E	3200K1753	3200H1750

## CORE INSPECTION PROCESS

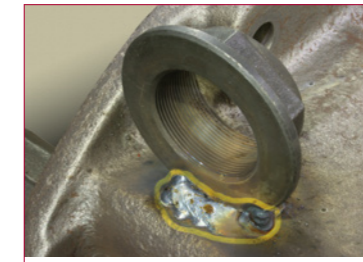
### Damaged Differential Core Examples



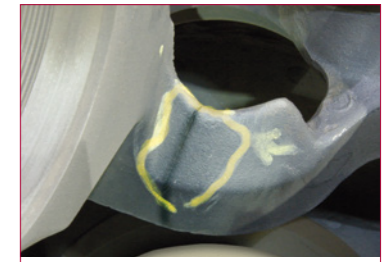
Adjustment Ring – Damaged Cups



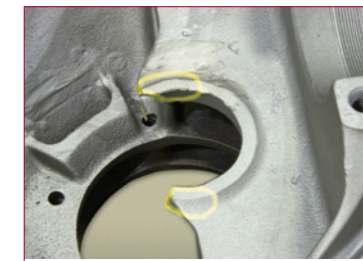
Excessive Corrosion



Excessive Weld



Inner Case – Cracked



Spigot Bore – Broken



Welded Spigot Bore

Description	Percentage Deduction of Full Core Value
Product not in an active core group within the Meritor CVA core series	100%
Cracked, Bulging, Broken Carrier	50%
Damaged Spigot Bore Area	50%
Missing Parts due to physical removal	50%
Burned Up Core	50%
Excessive Weld	50%
Disassembled Core - complete	100%
Core Not Drained of Oil	€100 Deduction
Excessive corrosion	50%

## IDENTIFYING THE DIFFERENTIAL TYPE

### The Identification Plate

Every differential leaving the Meritor factory is fitted with an identification plate which contains all the information needed to ensure the correct replacement parts are obtained.



Example:

**A38** **3200W1739** **411S**  
Prefix Base Number Ratio

### The Casting Number

If the plate is missing or not available:  
Locate casting reference on main differential case.



Example:

**3200** **X** **????**  
Letter 4 Digit Number